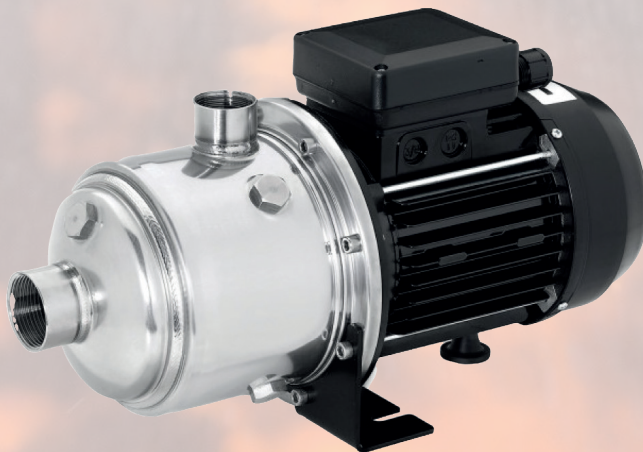


AquaGuard

Domestic Fire Pump Kit

BS9251:2021



AquaGuard

Domestic Fire Pump Kit - Manifold and Pump

The AquaGuard BS9251:2021 Domestic Fire Pump Kit is a cost effective solution for competent installers that want the quality of a pre-built AquaGuard pump set but the flexibility to position the individual components in a preferred location.

The kit comprises of a pre-wired AquaGuard fire pump controller with 2m of fire rated cable per connection, a pre-built and tested pump manifold (comprising of LPCB twin pressure switch, BS EN 12259-2 flow switch, solenoid valve, pressure gauge, check valve, lockable test valve and delivery valve) and a WRAS approved stainless steel multistage pump to suit the flow requirements of the sprinkler system.

The AquaGuard BS9251:2021 Domestic Fire Pump Kit can be installed directly onto the towns mains supply to increase the pressure only of a sprinkler system subject to the water authority approval and WRAS approved check valve.

Pump Manifold Features

- Pre-built and tested pump manifold
- LPCB Approved Twin Pressure Switches*
- BS EN 12259-2 Approved Flow Switch.*
- Weekly automatic testing via 230v solenoid output to ensure correct pressure switches operation.*
- Premium Components with Stainless Steel Manifold and 63mm Glycerine Gauge.

* As per the requirements of BS9251:2021

Technical

Dimensions

| | |
|----------------------|--------------------|
| DN25 1" Manifold | H430 x W270 x D180 |
| DN32 1 1/4" Manifold | H450 x W290 x D190 |

Weight

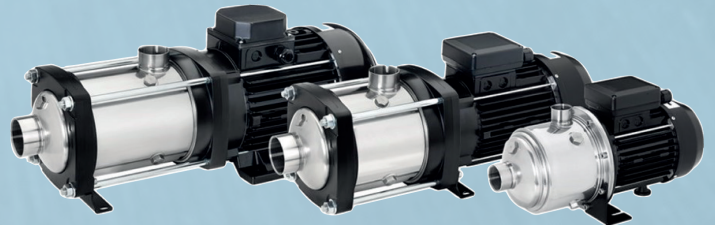
| | |
|----------------------|--------|
| DN25 1" Manifold | 4 kg |
| DN32 1 1/4" Manifold | 4.5 kg |

Multistage Pumps

AquaGuard can supply a compatible multistage pump to suit any flow and pressure requirement and any orientation required such as horizontal, vertical and submersible pumps.

All pumps are WRAS approved and have wetted parts constructed of stainless steel to ensure maximum reliability.

Highly efficient motors to achieve superior hydraulic performance.



Premium components with Stainless Steel manifold and Glycerine Gauge

Weekly test via 1/2" Solenoid valve to ensure correct pressure switch operation

LPCB and FM approved twin pressure switch with independent internal switches

Check valve with male thread to screw directly onto pump outlet

BS EN 12259-2 Approved flow switch



AquaGuard

Domestic Fire Pump Kit - Controller

The AquaGuard fire pump controller has been designed to control the operation, monitoring and automatic testing of the fire pump in accordance with BS9251:2021.

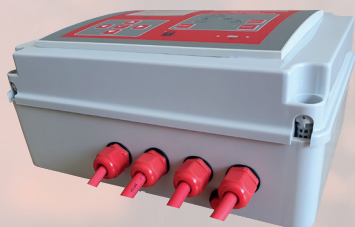
Incorporating an informative LCD display to assist programming and view/save event logs making the AquaGuard fire pump controller the most advanced on the market.

Pump Controller Features

- Fully BS9251:2021 compliant.
- LCD display showing current, voltage, pump status, faults, alarms and more.
- Tank level switch input supplied as standard on all Controllers.**
- Optional audible buzzer to alert of fault if unable to monitor fault contacts.*
- Add additional inputs/outputs i.e priority demand valve, monitored valves etc.
- Physical automatic testing via 230v solenoid output to ensure correct pressure switches operation.
- All components are wired failsafe normally closed**
- Pre wired with 2m of fire rated cable per connection - Reduced installation time.

* Audible buzzer will omit the fault output contacts.

** As per the requirements of BS9251:2021



Technical

| | | |
|---------------------|-------------------------------------|--------|
| Power | 230Vac 18 Amps maximum pump current | |
| Dimensions | Width | 305 mm |
| | Height | 305 mm |
| | Depth | 140 mm |
| Weight | 4.1 kg | |
| Construction | ABS IEC 60670, CEI 23-48 | |

Functions

- **Jockey Mode** - Upon pressure loss the pump will operate, if no flow is detected then pump will shut off after 1 minute, fault will indicate if jockey starts have exceeded daily limit.
- **Fire Mode** - If pressure loss and flow are detected pump will operate in fire mode until manually shut down.
- **Test Mode** - At a preset day/time the controller will open the solenoid valve until the pressure switches are activated and run the pump checking voltage/current are within set parameters.
- **Maintenance** - Maintenance interval is preset to every 12 Months but can be adjusted to suit specific interval requirements. Maintenance due indicator will require a physical flow test to reset.
- **Setup Mode** - All settings can be changed if required with the use of an advanced user password to prevent unauthorised access to settings.
- **Event Log** - Event log up to 128 entries can be accessed on the control panel.
- **Alarm outputs** - Pre-wired cable with normally closed NC fault contacts and normally closed NC fire/alarm contacts.

IP55 Rated enclosure to prevent water and dust ingress

Pre-wired with 2m of fire rated cable per connection

Bright LCD screen displaying pump information.

Easy to use interface to assist with setup up and maintenance.

LED status indicators and manual stop and reset buttons

